



Acetabular Cups, cementable

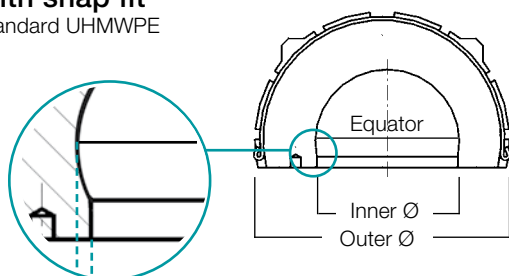
X-LINKed™ UHMWPE and standard UHMWPE

■ Model Lubinus® Eccentric Polyethylene Acetabular Cup

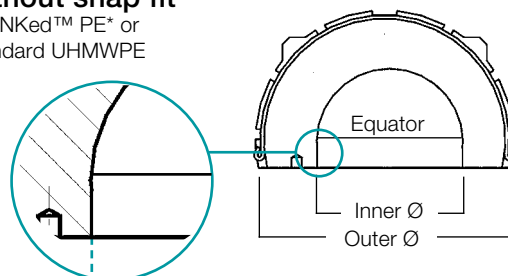
- X-LINKed™* or standard UHMWPE
- Cement fixation
- Standard and anti-luxation option (snap fit)
- Optimized material thickness in the main load area
- Integrated spacers for homogenous cement mantle
- Broad spectrum of sizes Ø 38 - 68 mm (16 sizes)
- Use of Ø 36 mm heads starting from cup outer Ø 50 mm



with snap fit
standard UHMWPE

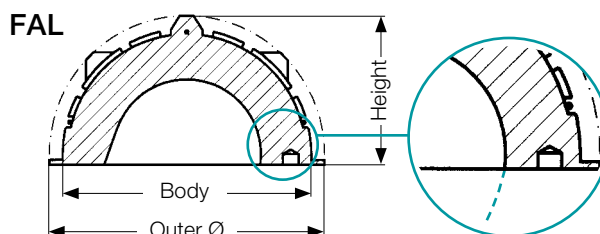
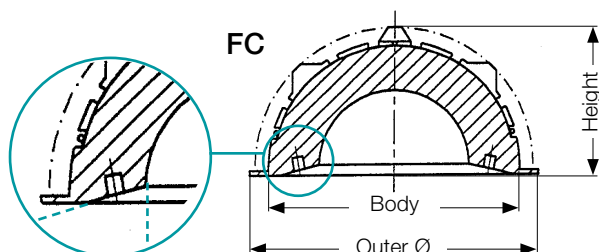


without snap fit
X-LINKed™ PE* or
standard UHMWPE


■ FC and FAL Polyethylene Acetabular Cup**

Flanged Cup and Flanged Cup anti-luxation

- X-LINKed™* or standard UHMWPE
- Cement fixation
- High cement compression due to circulating flange
- Increased range of motion due to optimized cup design
- Suitable for acetabuli with shallow depths
- Standard (FC) or anti-luxation option (FAL)
- Integrated spacers for homogenous cement mantle
- Broad spectrum of sizes: FC – Ø 48 - 62 mm (8 sizes)
FAL – Ø 48 - 68 mm (11 sizes)
- Use of Ø 36 mm heads starting from cup outer Ø 54 mm



■ Acetabular Cups – cementable

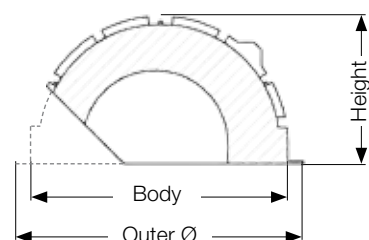
■ IP Polyethylene Acetabular Cup

- X-LINKed™* or standard UHMWPE
- Cement fixation
- Increased range of motion due to optimized cup design
- Integrated spacers for homogenous cement mantle
- Broad spectrum of sizes Ø 42 - 68 mm (14 sizes)
- Use of Ø 36 mm heads starting from cup outer Ø 50 mm



■ Endo-Model® Polyethylene Acetabular Cup

- Standard UHMWPE
- Cement fixation
- Standard and anti-luxation option
- Increased range of motion due to optimized cup design
- Mediocaudal recess protects nervus femoralis and psoas tendon
- Right and left version
- Optimized material thickness in the main load area
- Integrated spacers for homogenous cement mantle
- Range of sizes: standard Ø 50 - 71 mm (5 sizes), anti-luxation Ø 50 - 60 mm (3 sizes)
- Suitable for Ø 28 mm and Ø 32 mm heads



* X-LINKed™ is a highly crosslinked UHMWPE made by WALDEMAR LINK GmbH & Co. KG. X-LINKed™ is not available in the U.S.

** FC Polyethylene Acetabular Cup available in standard UHMWPE only



WALDEMAR LINK GmbH & Co. KG
Barkhausenweg 10 · 22339 Hamburg, Germany
P.O. Box 63 05 52 · 22315 Hamburg, Germany
Tel.: +49 40 53995-0 · Fax: +49 40 5386929
E-mail: info@linkhh.de · Internet: www.linkhh.de

