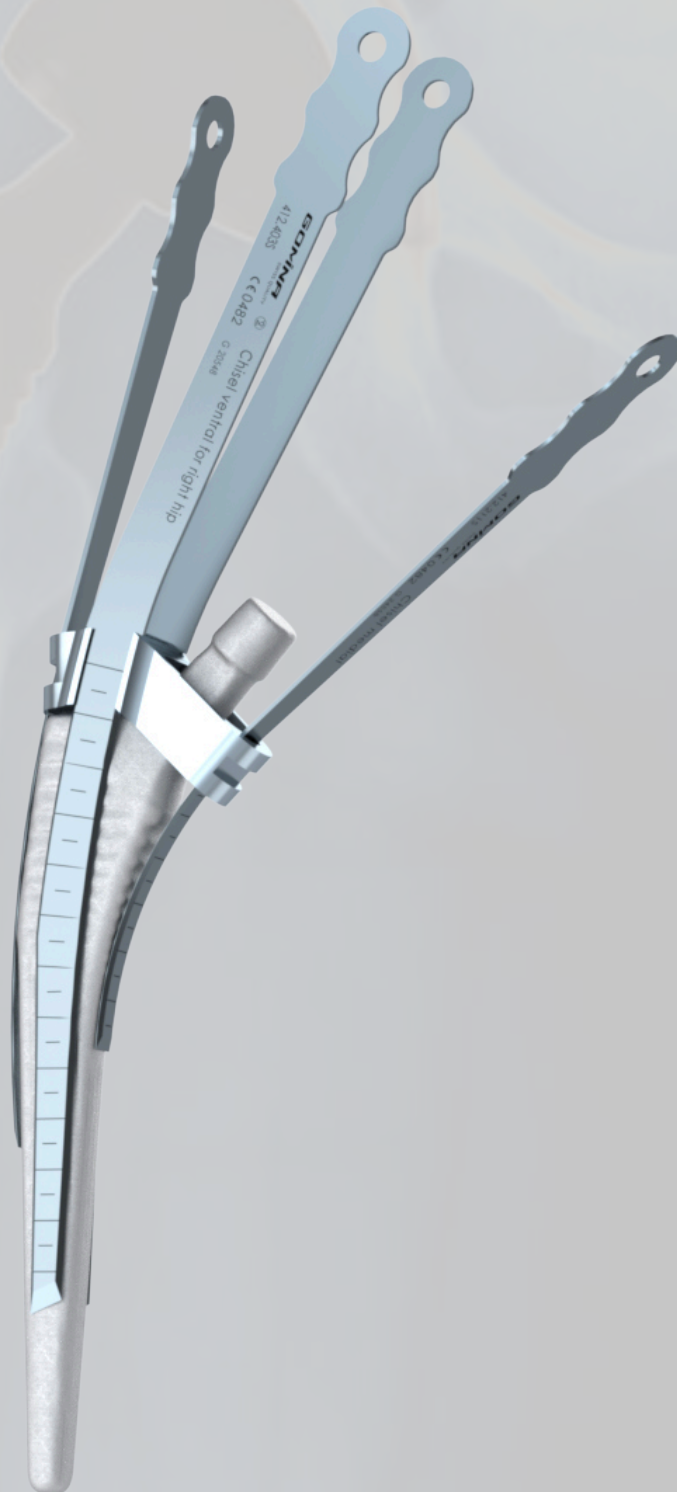


Extraction set for hip revisions

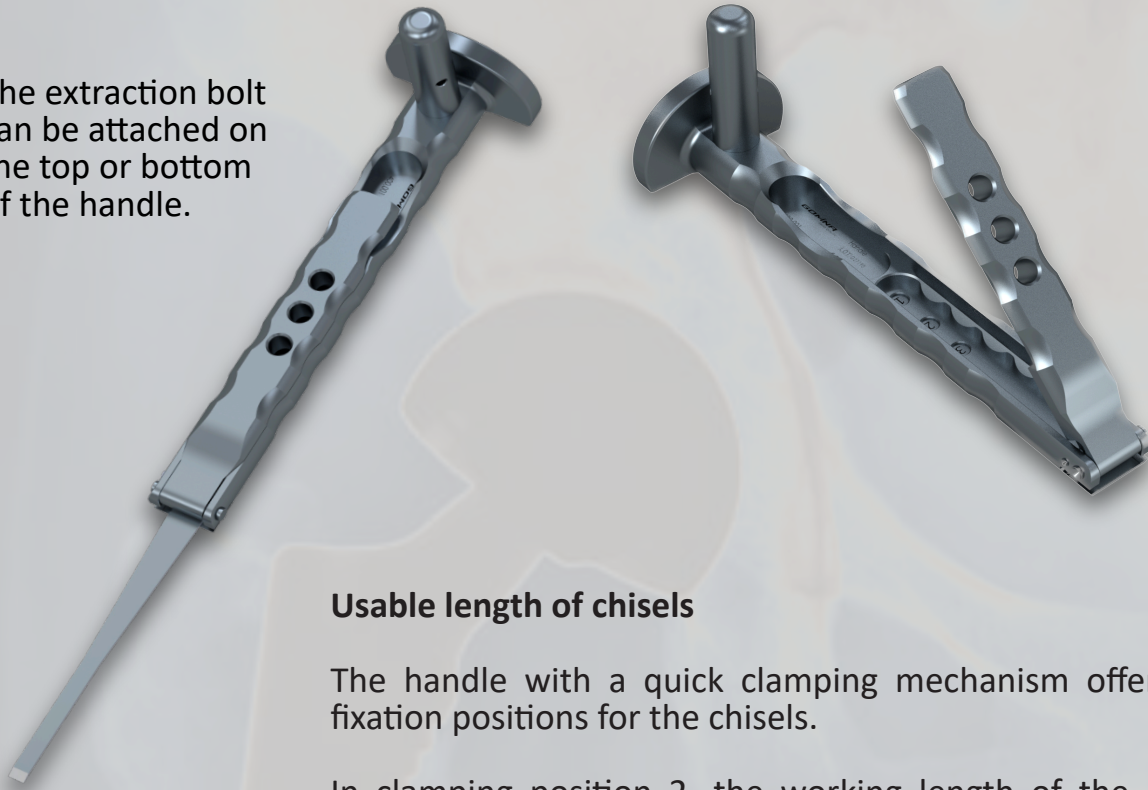
Jig-guided system

fitting **Corail**[®] (DePuy Synthes)



Handle and extraction bolt

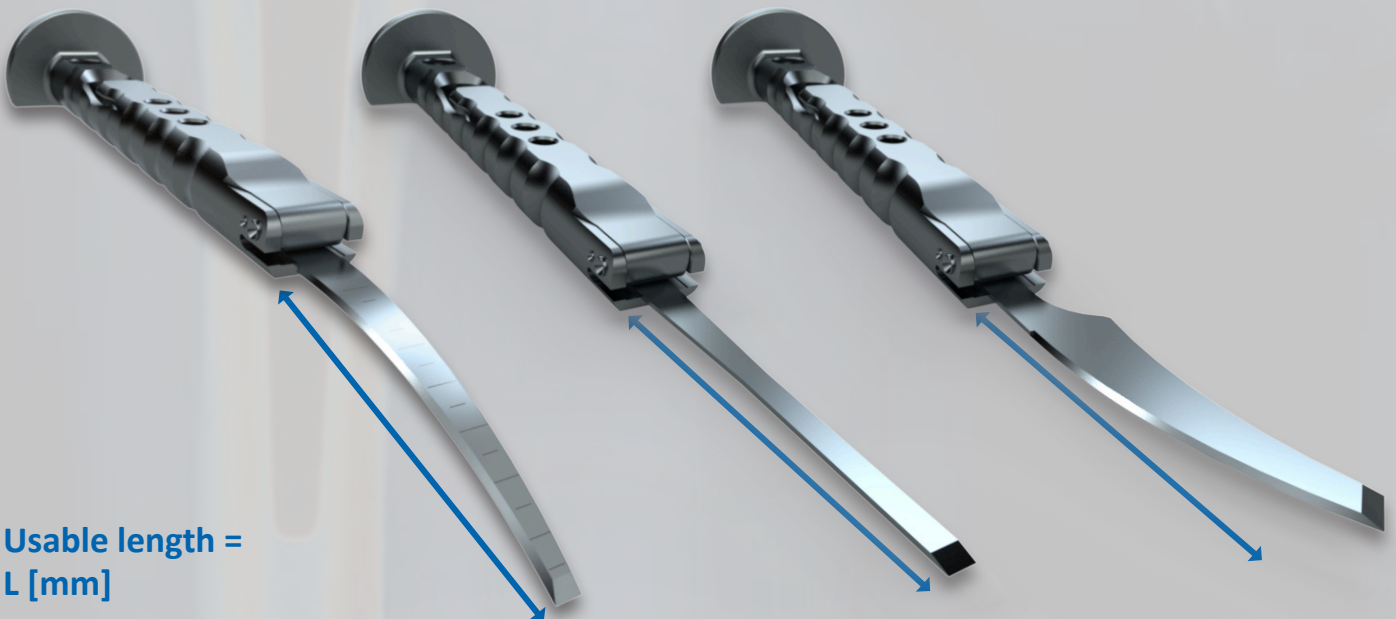
The extraction bolt can be attached on the top or bottom of the handle.



Usable length of chisels

The handle with a quick clamping mechanism offers three fixation positions for the chisels.

In clamping position 2, the working length of the chisel is extended by 15 mm compared to position 1, and by a further 15 mm in position 3. In total, the working length can be extended by 30 mm from position 1 to position 3.

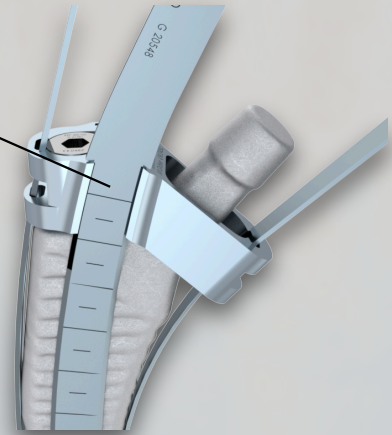
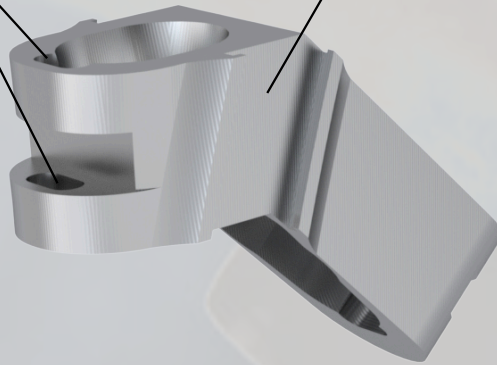


Usable length =
L [mm]

Jig

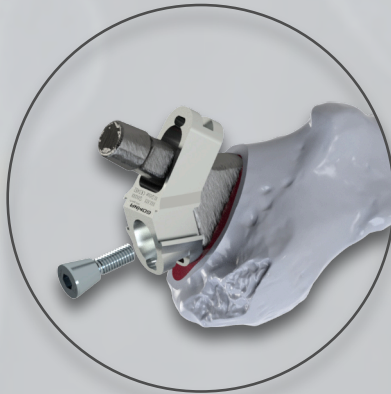
Guide slots

Guide grooves



The jig-guided chisels are matched to the guide slots and grooves of the corresponding jigs. The chisels are guided through both guide slots (or grooves) until the cutting edge makes contact with the bone. Then the chisels can be driven in with light hammer strikes.

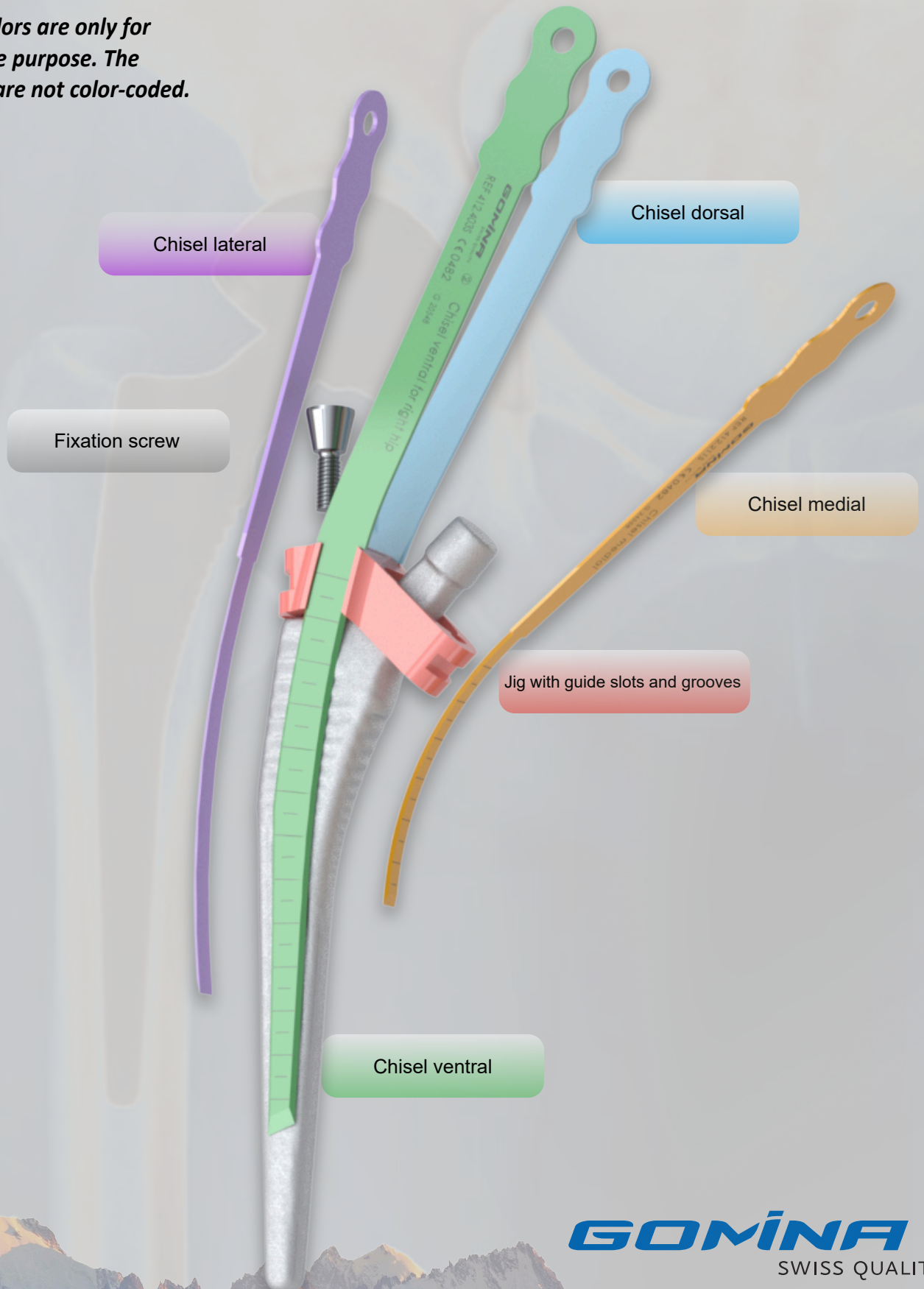
The jig is positioned on the cone of the stem and attached with the fixation screw.



The jig must be correctly positioned on the stem in the lateral-medial direction before it is fixed with the screw. Use the lateral guide slot as a reference.

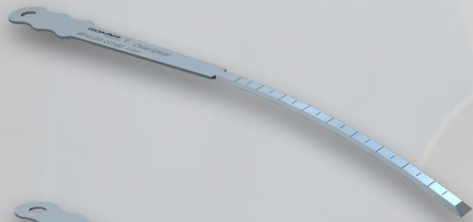
Overview of chisels with jig

**Note: colors are only for illustrative purpose. The products are not color-coded.*



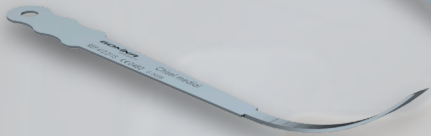
Indicated references by stem size

Corail® stem sizes **08, 09, 10**

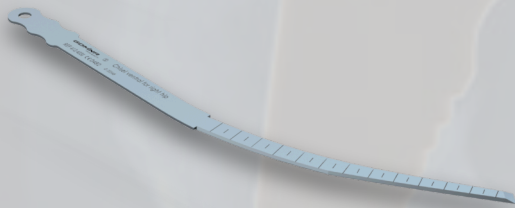


Reference (sterile)	Article Description	L [mm]	W [mm]	T [mm]
---------------------	---------------------	--------	--------	--------

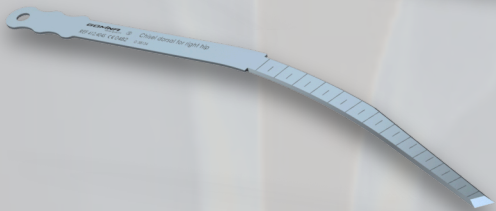
412.201S	Chisel lateral	133.0	4.8	1.19
-----------------	----------------	-------	-----	------



412.211S	Chisel medial	105.2	5.8	1.19
-----------------	---------------	-------	-----	------

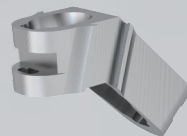


412.401S	Chisel ventral for right hip	170.0	4.0	1.19
-----------------	------------------------------	-------	-----	------



412.402S	Chisel dorsal for right hip	170.0	4.0	1.19
-----------------	-----------------------------	-------	-----	------

Ref. (non-sterile)	Article Description
--------------------	---------------------



412.901	Jig
----------------	-----



400.102	Fixation screw
----------------	----------------

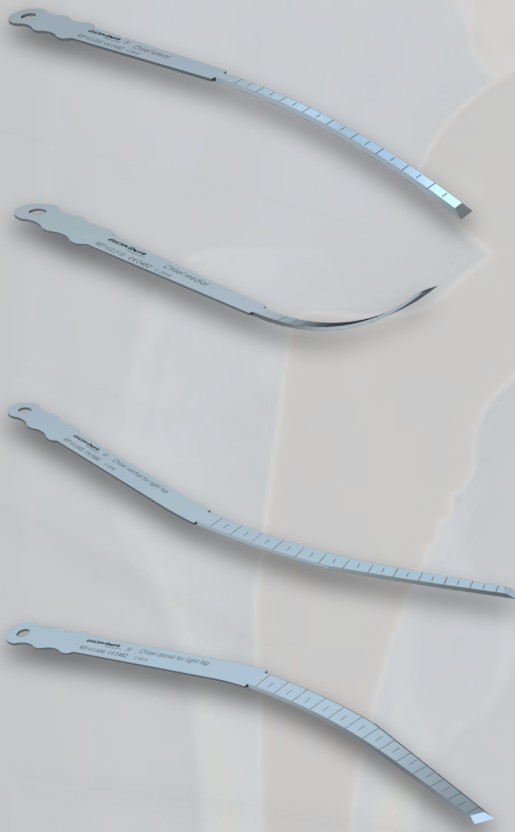


400.104	Allen key
----------------	-----------

GOMINA
SWISS QUALITY

Indicated references by stem size

Corail® stem sizes **11, 12, 13**



Reference (sterile)	Article Description	L [mm]	W [mm]	T [mm]
---------------------	---------------------	--------	--------	--------

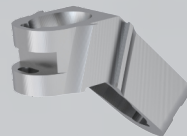
412.202S	Chisel lateral	138.0	6.0	1.19
-----------------	----------------	-------	-----	------

412.211S	Chisel medial	105.2	5.8	1.19
-----------------	---------------	-------	-----	------

412.403S	Chisel ventral for right hip	170.0	7.1	1.19
-----------------	------------------------------	-------	-----	------

412.404S	Chisel dorsal for right hip	170.0	7.1	1.19
-----------------	-----------------------------	-------	-----	------

Ref. (non-sterile)	Article Description
--------------------	---------------------



412.903	Jig
----------------	-----



400.102	Fixation screw
----------------	----------------

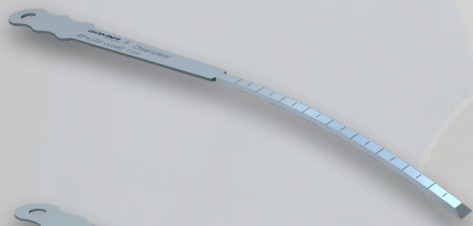


400.104	Allen key
----------------	-----------

GOMINA
SWISS QUALITY

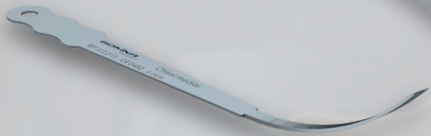
Indicated references by stem size

Corail® stem sizes 14, 15, 16

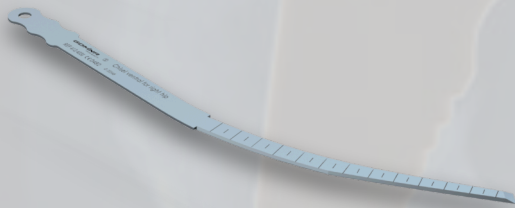


Reference (sterile)	Article Description	L [mm]	W [mm]	T [mm]
---------------------	---------------------	--------	--------	--------

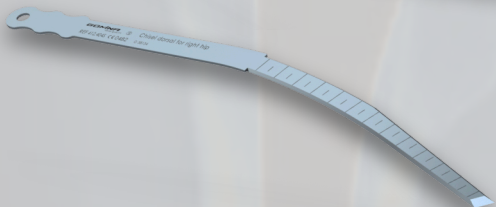
412.202S	Chisel lateral	138.0	6.0	1.19
-----------------	----------------	-------	-----	------



412.211S	Chisel medial	105.2	5.8	1.19
-----------------	---------------	-------	-----	------

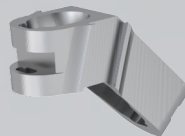


412.405S	Chisel ventral for right hip	215.3	7.4	1.19
-----------------	------------------------------	-------	-----	------



412.406S	Chisel dorsal for right hip	215.3	7.4	1.19
-----------------	-----------------------------	-------	-----	------

Ref. (non-sterile)	Article Description
--------------------	---------------------



412.905	Jig
----------------	-----



400.102	Fixation screw
----------------	----------------

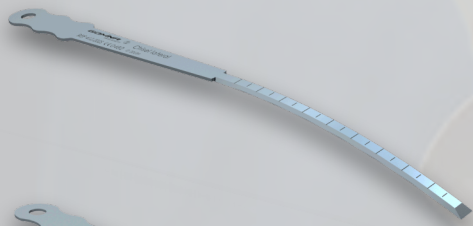


400.104	Allen key
----------------	-----------

GOMINA
SWISS QUALITY

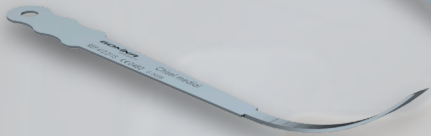
Indicated references by stem size

Corail® stem sizes **18, 20**

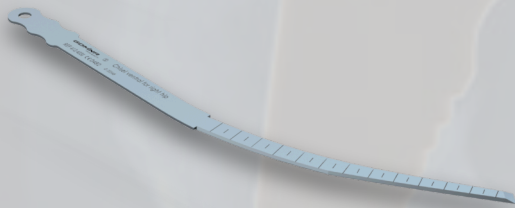


Reference (sterile)	Article Description	L [mm]	W [mm]	T [mm]
---------------------	---------------------	--------	--------	--------

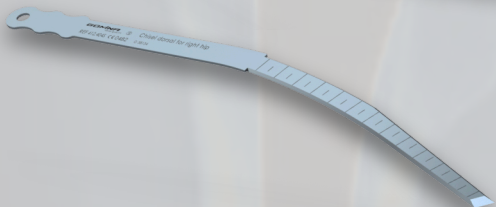
412.202S	Chisel lateral	138.0	6.0	1.19
-----------------	----------------	-------	-----	------



412.211S	Chisel medial	105.2	5.8	1.19
-----------------	---------------	-------	-----	------

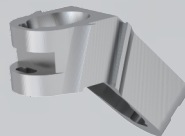


412.407S	Chisel ventral for right hip	233.5	9.7	1.19
-----------------	------------------------------	-------	-----	------



412.408S	Chisel dorsal for right hip	233.5	9.7	1.19
-----------------	-----------------------------	-------	-----	------

Ref. (non-sterile)	Article Description
--------------------	---------------------



412.907	Jig
----------------	-----





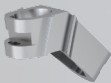

400.102	Fixation screw
----------------	----------------



400.104	Allen key
----------------	-----------

GOMINA
SWISS QUALITY

Overview of all references

	Corail® stem size	Reference	Article Description	L [mm]	W [mm]	T [mm]
	All sizes	400.001	Handle incl. extraction bolt			
	All sizes	400.100	Extraction bolt (spare part)			
	08/09/10	412.201S	Chisel lateral	133.0	4.8	1.19
	11/12/13/14/15/16/18/20	412.202S	Chisel lateral	138.0	6.0	1.19
	All sizes	412.211S	Chisel medial	105.2	5.8	1.19
	08/09/10	412.401S	Chisel ventral for right hip	170.0	4.0	1.19
	08/09/10	412.402S	Chisel dorsal for right hip	170.0	4.0	1.19
	11/12/13	412.403S	Chisel ventral for right hip	170.0	7.1	1.19
	11/12/13	412.404S	Chisel dorsal for right hip	170.0	7.1	1.19
	14/15/16	412.405S	Chisel ventral for right hip	215.3	7.4	1.19
	14/15/16	412.406S	Chisel dorsal for right hip	215.3	7.4	1.19
	18/20	412.407S	Chisel ventral for right hip	233.5	9.7	1.19
	18/20	412.408S	Chisel dorsal for right hip	233.5	9.7	1.19
	08/09/10	412.901	Jig			
	11/12/13	412.903	Jig			
	14/15/16	412.905	Jig			
	18/20	412.907	Jig			
	All sizes	400.102	Fixation screw			
	All sizes	400.104	Allen key			

Contact



Gomina AG
Raiftstrasse 4
3989 Niederwald, Schweiz
Phone +41 27 970 12 70
Fax +41 27 970 12 75
www.gomina.ch
sales@gomina.ch



GOMINA Deutschland GmbH
Ludwig-Vierling-Strasse 7
89233 Neu-Ulm, Deutschland
info@gomina.de

Version 2024-03
Last modification: 01.03.2024

Official Distributor for Sweden:

LINK SWEDEN

Företagsallén 14 B,
184 40 Åkersberga, Sweden
Phone: 08-544 103 80
E-post: order@linksweden.se
www.linksweden.se

