

Protect Yourself From the Elements¹



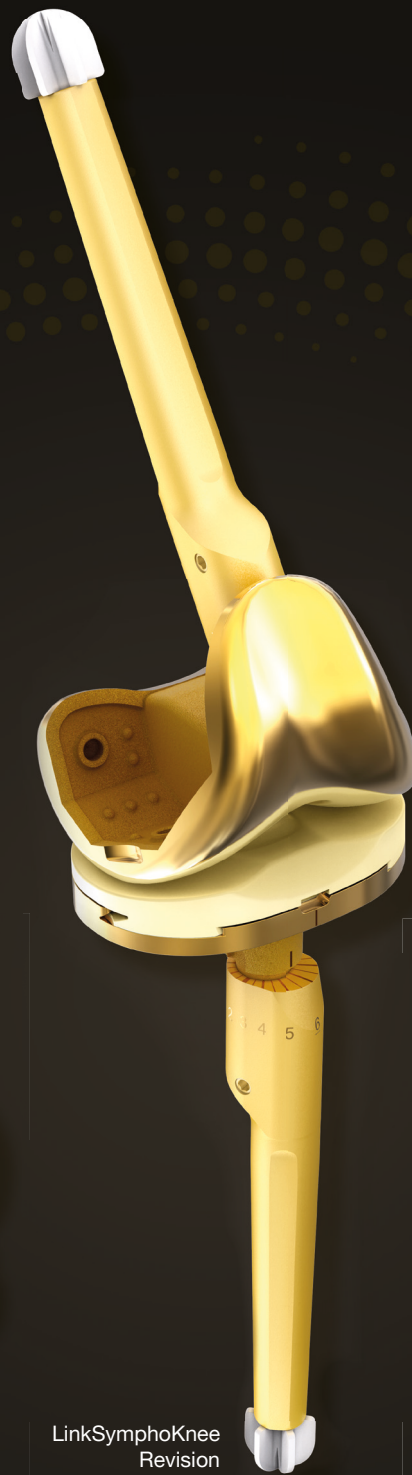
**LINK PorEx - Trusted in over
15,000 cases¹ since 2009.**

¹Estimated global implantations.

LINK PorEx



LINK SLED Prosthesis



LinkSymphoKnee
Revision



Endo-Model M



LinkSymphoKnee



Endo-Model
Standard

- ~4-6 micron thick ceramic-like surface coating, which significantly reduces the metal ion release of the substrate.¹
- Link PorEx surface is extremely hard and possesses abrasion properties similar to those of ceramics.²
- The properties and wetting angle of the LINK PorEx give it a low friction coefficient when in contact with fluids.¹
- Approximately 4 times the surface hardness of CoCrMo.¹

¹Internal technical report: Study of the influence of TiN coating on the ion release of CoCrMo-alloys in SBF buffer simulator testing.

²Banci L, Balato G, Salari P, Baldini A. "Systematic review and meta-analysis of ceramic coated implants in total knee arthroplasty. Comparable mid-term results to uncoated implants." . Knee Surg Sports Traumatol Arthrosc. 2021 Oct 29. doi: 10.1007/s00167-021-06775-6. Epub ahead of print. PMID: 34714355.